

WYANDOTTE COUNTY, KANSAS RELIEF MAP



County Seal



Standard Abbreviation
 WY
County Seat
 Kansas City
Population
 158,331
 Source: US Census, July 1, 2002 estimate

Metro Area
 Kansas City MSA

History
 Founded in 1859. Named after Wyandotte Indian tribe.

Area
 Land Only- 151.4 square miles (96,896 acres).
Excludes water area of 4.3 sq. mi.
 Total- 155.7 square miles (99,648 acres). Total with water portion included.
 Source: 2000 US Census

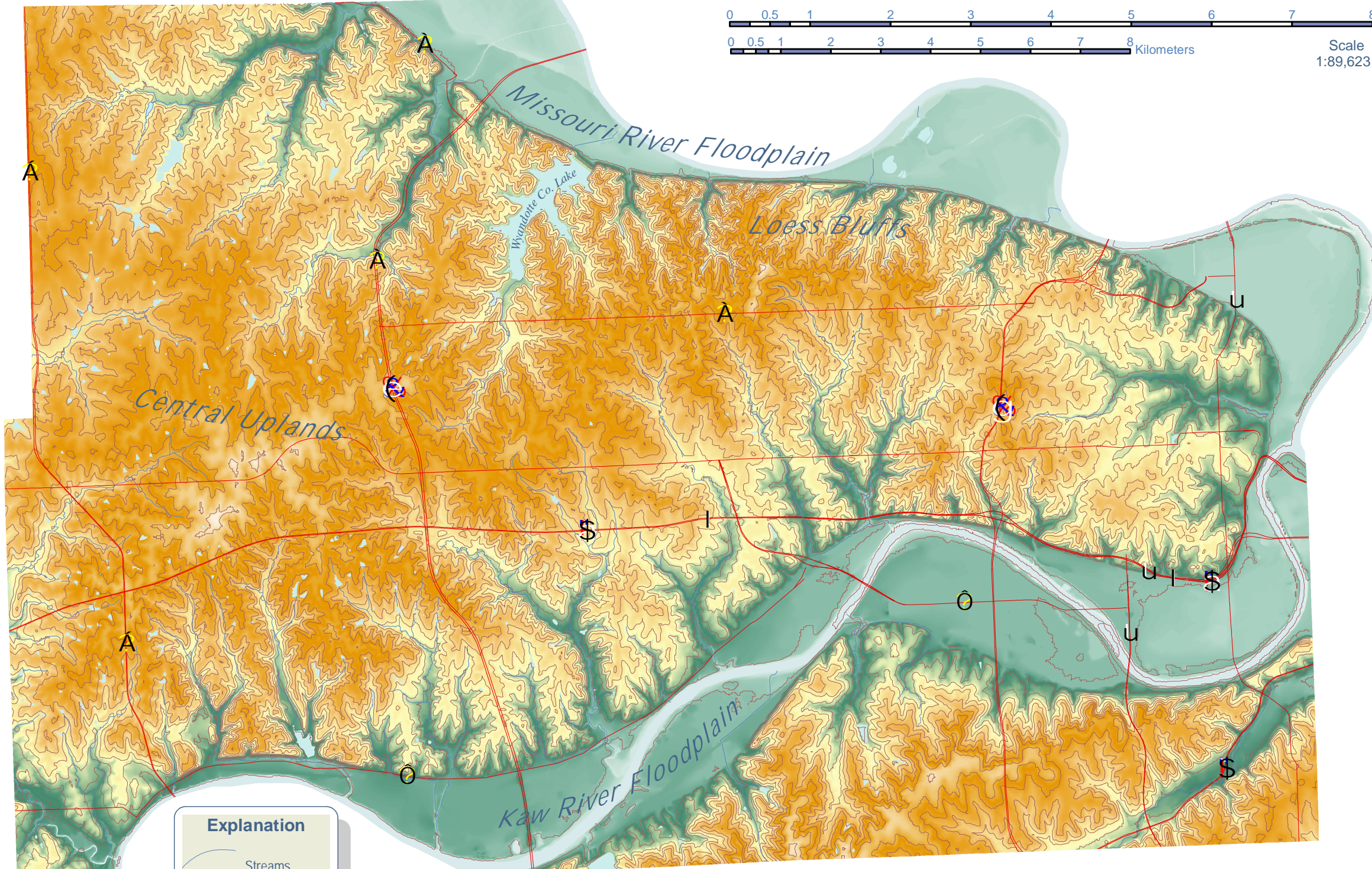
Dimensions
 Maximum Dimensions:
 East-West- 17.13 miles
 North-South- 14.70 miles
 County Border Perimeter Length:
 62.72 miles
 Source: UG GSS

Major Watercourses
 Missouri River
 Kansas (Kaw) River
 Mill Creek
 Turkey Creek
 Jersey Creek
 Little Turkey Creek
 Mission Creek
 Honey Creek
 Marshall Creek
 Conner Creek
 Betts Creek
 Wolf Creek

Largest Lakes
 Wyandotte County Lake- 345.37 acres
 Piper Lake- 46.68 acres
 Lake Quivira- 32.27 acres (Wy. Co. portion)
 Source: UG GSS

Elevation
 Highest- 1,063 feet above sea level.
 Lowest- 727 feet above sea level.
 Source: UG GSS

Geographic Coordinates
 Geographic Center of County:
 Longitude- 94° 45' 51" W (94 Degrees 45 Minutes 51 Seconds West)
 Latitude- 39° 6' 52" N



Explanation

- Streams
- Lakes
- 10 m. Contours
- Elevation Model Value
- High : 331.3 m.
- Low : 219.9 m.

Magnetic Declination
 As of 9/21/06
 2° 25' E changing by 0° 7' W/year

About This Map
 This map depicts topography and major physiographic features of Wyandotte County, KS.
 Geospatial elevation data are utilized by the government and scientific communities for global change research, hydrologic modeling, resource monitoring, mapping, and visualization applications.
 Terrain elevation data source is USGS National Elevation Dataset (NED) DEM with 10 m. grid resolution. Contour lines are also derived from this DEM (contours data source is Mid-America Regional Council).
 All other data layers and cartography are from UG GeoSpatial Services (GSS), a division of Department of Technical Services (DOTS), Unified Government.