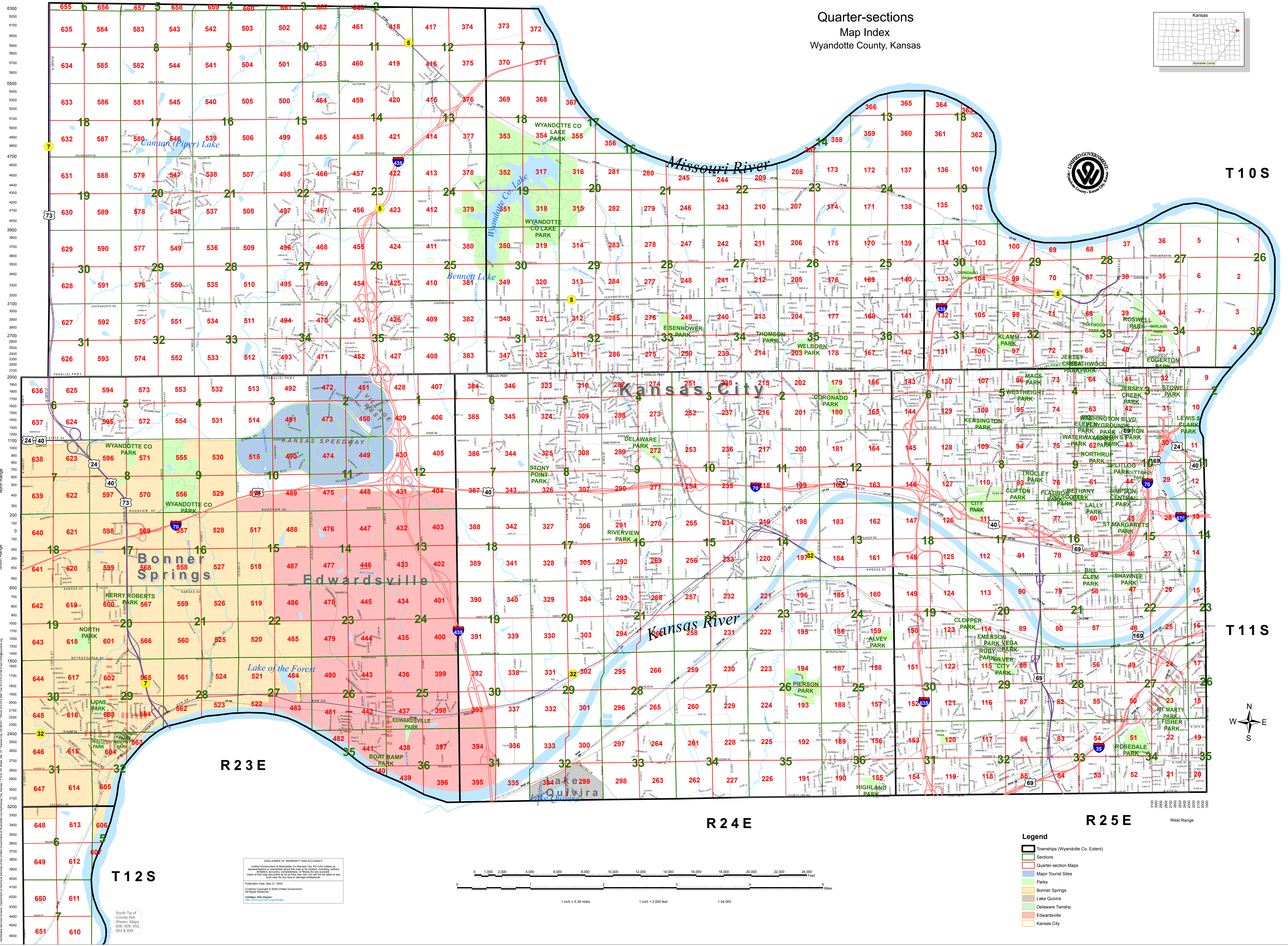
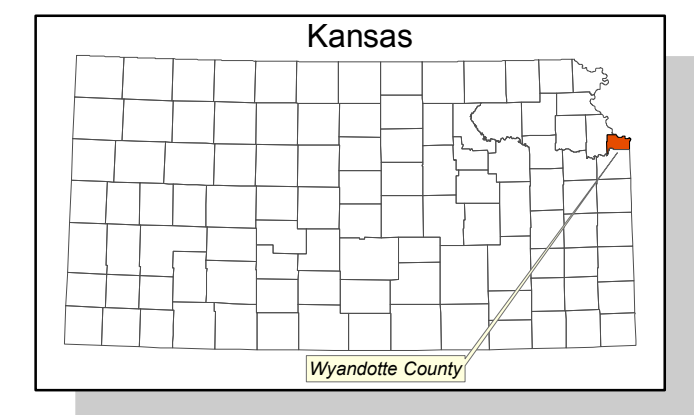
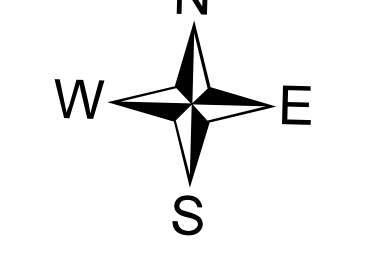


Quarter-sections  
Map Index  
Wyandotte County, Kansas



T 10 S

T 11 S



6300  
6200  
6100  
6000  
5900  
5800  
5700  
5600  
5500  
5400  
5300  
5200  
5100  
5000  
4900  
4800  
4700  
4600  
4500  
4400  
4300  
4200  
4100  
4000  
3900  
3800  
3700  
3600  
3500  
3400  
3300  
3200  
3100  
3000  
2900  
2800  
2700  
2600  
2500  
2400  
2300  
2200  
2100  
2000  
1900  
1800  
1700  
1600  
1500  
1400  
1300  
1200  
1100  
1000  
900  
800  
700  
600  
500  
400  
300  
200  
100  
0  
100  
200  
300  
400  
500  
600  
700  
800  
900  
1000  
1100  
1200  
1300  
1400  
1500  
1600  
1700  
1800  
1900  
2000  
2100  
2200  
2300  
2400  
2500  
2600  
2700  
2800  
2900  
3000  
3100  
3200  
3300  
3400  
3500  
3600  
3700  
3800  
3900  
4000  
4100  
4200  
4300  
4400  
4500  
4600  
4700  
4800  
4900  
5000  
5100  
5200  
5300  
5400  
5500  
5600  
5700  
5800  
5900  
6000  
6100  
6200  
6300

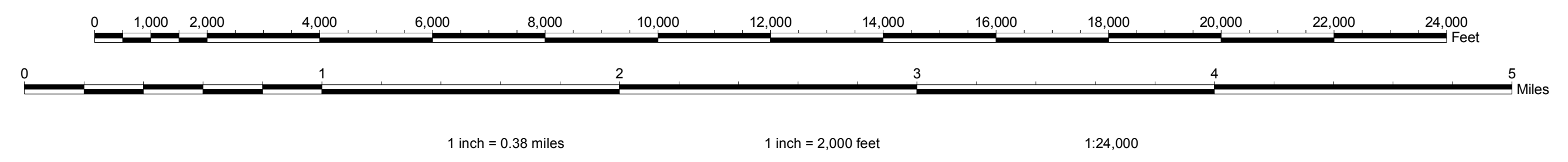
R 23 E

R 24 E

R 25 E

West Range

DISCLAIMER OF WARRANTY AND ACCURACY  
United Government of Wyandotte County, Kansas, AS (GC) makes no  
representation or warranty about the map's accuracy, including without  
limitation, accuracy in location, scale, or other details. Users of this map  
document are advised to verify the accuracy of the information shown on  
this map for their own use. GC will not be liable to any  
third party for any loss or damage arising from the use of this map.



Legend

- Townships (Wyandotte Co. Extent)
- Sections
- Quarter-section Maps
- Major Tourist Sites
- Parks
- Bonner Springs
- Lake Quivira
- Delaware Twship
- Edwardsville
- Kansas City

South Tip of  
County Not  
Shown. Maps  
600, 609, 652,  
653 & 654